



ORDER BY 3PM FOR NEXT DAY DELIVERY



NATIONWIDE COURIER DELIVERY SERVICE



CUSTOMER SATISFACTION GUARANTEED



NO QUIBBLE RETURNS POLICY

- Solid Busbars
- Laminated Busbars
- Earth Bars
- Heatsinks, Coolers & Machined Parts
- Braided or Laminated Flexible Connectors & Leads
- Custom Components
- Cable Terminations
- Heavy Duty Terminal Lugs
- Standard Duty Terminal Lugs
- Extended Palm 2 Hole fixing Lugs
- Flag Terminal
- Transformer Terminals 4 Hole Fixing
- Brazed Palm Assemblies
- High Voltage Splices
- Heavy Duty Butt Splices
- Parallel Butt Splices
- Copper Pin Terminals
- Dissimilar Copper Splices
- Telecommunication Terminals

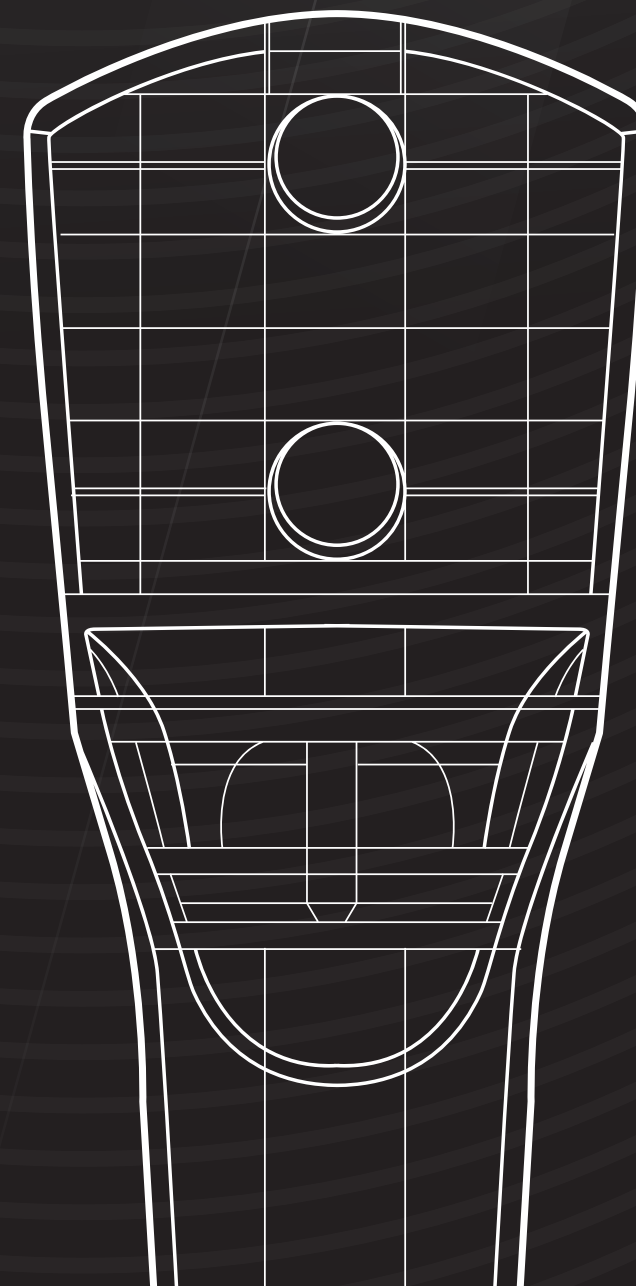
cguk

Cable Glands UK Ltd.
Unit 16-17 Premier Park
Acheson Way, Trafford Park
Manchester, M17 1GA
Tel: 0161 874 1480
Fax: 0161 877 2013
info@cableglandsuk.com
www.cableglandsuk.com

cguk[®]
cableglandsuk.com

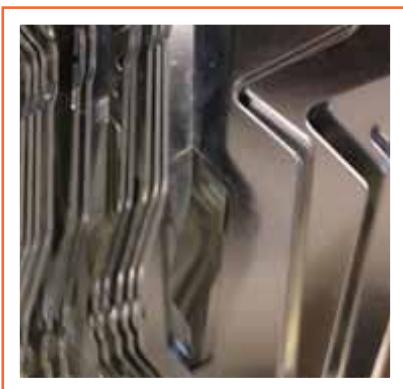
Manufacturing

High Quality Terminations
& Copper Components



We can help you design an optimum combination of functional performance and manufacturing cost to suit your application or simply produce your established designs with maximum efficiency and minimum cost.

With a broad, and expanding, range of ISO 9001 UK manufacturing & finishing processes total commitment and a wealth of experience we are here to help you provide your customers with reliable components, equipment and installations.



- Solid Busbars 1
- Laminated Busbars 1
- Earth Bars 1
- Heatsinks, Coolers & Machined Parts 2
- Braided or Laminated Flexible Connectors & Leads 2
- Custom Components 2
- Cable Terminations 3

- Standard Range:
- Heavy Duty Terminal Lugs -Type HD 4
- Standard Duty Terminal Lugs -Type NT 5
- Extended Palm 2 Hole fixing Lugs -Type poi 6
- Flag Terminal -Type FT 6
- Transformer Terminals 4 Hole Fixing – Type 8TF4H 7
- Brazed Palm Assemblies 7
- High Voltage Splices 7
- Heavy Duty Butt Splices -Type bshd 8
- Parallel Butt Splices -Type ps 8
- Copper Pin Terminals 9
- Dissimilar Copper Splices 9
- Telecommunication Terminals -Type POI 10
- Earth Bars 10

IMAGE GALLERY 11, 12



SOLID BUSBARS



- Conventional busbars from standard sections with powerful press-forming edge-bending to optimise material utilisation
- Precision sheet profiles by, water-jet or fibre-laser
- Full range of electrical finishes
- Insulation available as sleeves, thermally bonded laminates, coatings or encapsulation

Solid busbars optimise DC resistance and thermal stability in LF applications but higher frequencies need thinner sheets to minimise inductance and AC resistance. Compared to copper, the higher resistivity of aluminium can be offset by its greater skin depth penetration. We can assist with thermal and electrical modelling to optimise design parameters.

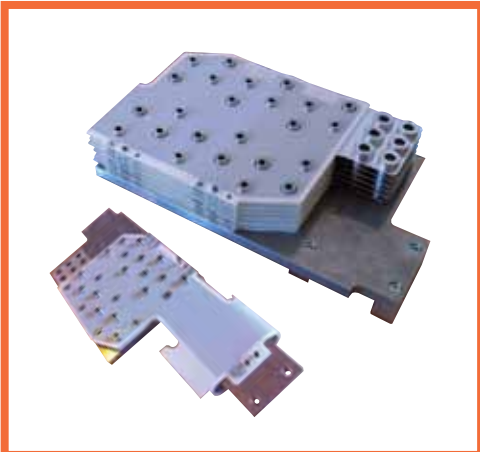
HEATSKINS, COOLERS & MACHINED PARTS



- Silver tipped contacts available
- Deep hole drilling
- CAD cam programming
- Large array of tooling

Precisely toleranced water-cooled blocks and heat sinks are essential for the efficient operation of many types of electrical and electronic devices. Our investment in CNC machinery facilitates precise control of the manufacturing process of close surface tolerance machined blocks. We manufacture to your designs and specifications but can also offer a wealth of experience and advice which adds value to our service.

LAMINATED BUSBARS



- Precision conductor profiles by, water-jet or fibre-laser
- Full range of electrical finishes
- PET/epoxy insulation film thermally bonded under vacuum
- Collars, inserts and accessories

HFPC demands low-inductance interconnection for IGBTs and their capacitors with closely spaced thin sheets to minimise inductance and AC resistance. Compared to copper, the higher resistivity of aluminium can be offset by its greater skin depth penetration. We can assist with thermal and electrical modelling to optimise design parameters.*

BRAIDED OR LAMINATED FLEXIBLE CONNECTORS AND LEADS



- Flexible leads terminated with standard or customised terminations crimped, swaged or brazed
- Single or multiple braids with customized termination collars
- Laminated busbars with soldered terminations
- Range of insulation sleeves, materials, collars and accessories

Cables, braids and laminated busbars provide an obvious answer for flexibility and mechanical isolation. The lengths of multiple conductors should be equalised however as imbalanced current pathways can cause overheating and damage in the thermally separated strands or braids.

* Under Development

* Under Development

EARTH BARS



- Can supply with dislocating link
- Links as required
- Supply up to 2m lengthss
- Any combination of links and bar

We manufacture earth bars to your requirements using quality components. This bespoke service is tailored to your needs. Any size of copper bar can be sourced, fixing materials changed and channel bases can be redesigned to enable a product to be engineered that meets your requirements exactly

CUSTOM COMPONENTS



- Pressings & formed parts
- Edge-winding for inductors and blow-out coils
- Air- and water-cooled heat-sinks
- Machined components
- Extensive range of materials, processes, finishes, insulators and accessories
- Testing, computer modelling and numerical analysis available for prototypes

If you are looking to manufacture your own designs we can help to optimise the quality and cost and provide first-class support with production control, delivery schedules and quality assurance. If you need a new design for your application then we can offer advice, prototypes, testing and pilot manufacture.



CABLE TERMINATIONS

- Heavy-Duty terminals have a cross-section nominally equal to the cable and are required for applications expected to survive high surge-currents. Design features can be specifically configured for their application (e.g. HV or buried connections etc.).
- Protected-Circuit terminals have a lighter wall section and are designed to provide secure crimping and long life-cycles when working currents are actively limited to the cable's normal rating.

Cable terminations and related components are only manufactured from optimum-purity original millproduced copper. In-house recycling is not used owing to the risk of trace contaminants that can seriously impair electrical and mechanical performance. Whilst custom parts are available in any format, two concepts cover most applications: Heavy and Standard Duty Terminal Lugs



The standard electroplated coating of tin maintains electrical performance for cables used with normal rated currents and with connection temperatures between -20°C and +60°C.

A further range of coatings, including nickel and silver, is available to optimise reliability and performance in critical applications and extreme conditions. Both standard and bespoke tooling and dies are available for all our terminals along with detailed specifications of process parameters.



All our terminals are capable of compliance with EN 61238, and many other performance standards, but please note that verification requires testing a combination of cable, termination and crimping method. We are more than happy to provide further details on this subject and can also establish many more detailed aspects of electrical and thermal performance through testing, numerical analysis and computer modelling.

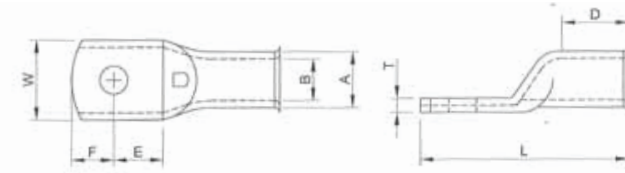
Certificates of compliance are also available for parts requiring verification of controlled manufacture or performance.



We can supply a full range of crimping tools. Please contact our sales office for assistance

HEAVY DUTY TERMINAL LUGS - TYPE HD

The numerical part of the series reference denotes the conductor cross sectional area in mm². Thus to order, for example, a terminal for a 10mm² conductor and a M12 stud size the full ordering reference is CAT10-12.

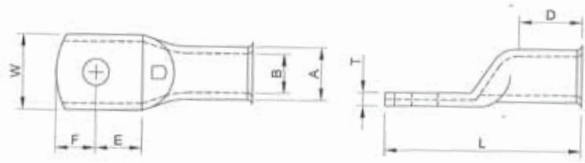


CAT REF	STUD SIZE (MM)	A	B	W	E	F	D	L	T
CAT1.5	4,5	3.6	1.9	8.0	5.0	4.0	6.0	18.0	0.9
	6	3.6	1.9	10.0	6.0	5.5	6.0	20.0	0.6
CAT2.5	4	3.9	2.4	7.7	5.0	4.0	7.5	20.0	1.0
	5	3.9	2.4	10.0	5.5	5.5	8.0	21.5	1.1
	6	3.9	2.4	10.0	6.5	5.5	8.0	21.5	0.6
	8	4.4	2.6	12.0	9.0	6.0	8.0	26.5	0.7
CAT4	4	4.7	3.0	10.0	6.0	5.0	8.0	21.5	1.1
	5,6	4.7	3.0	10.0	5.5	5.5	8.0	21.5	1.1
	8	4.7	3.0	12.0	9.0	6.0	7.5	26.5	0.9
	10	5.5	3.8	10.0	5.9	54.1	8.5	24.5	1.2
CAT6	4	5.5	3.8	10.0	5.9	5.1	8.5	24.5	1.2
	5	5.5	3.8	10.0	5.9	5.1	8.5	24.5	1.2
	6	5.5	3.8	10.0	5.9	54.1	8.5	24.5	1.2
	8	5.5	3.8	12.0	8.0	7.0	8.5	27.5	1.0
	10	5.5	3.8	15.0	13.0	8.0	8.5	34.0	0.9
	B, 5, 6,	6.9	4.4	11.0	5.9	5.1	9.0	27.0	2.0
CAT10	8	6.9	4.4	14.0	9.7	8.3	10.0	35.0	1.6
	10	6.9	4.4	16.0	12.0	10.0	10.0	39.0	1.5
	12	6.9	4.4	18.0	12.0	10.0	10.0	39.0	1.2
	B, 5, 6	8.0	5.6	11.5	5.9	5.1	11.0	28.5	2.2
CAT16	8	8.0	5.6	14.0	9.7	8.3	13.0	38.0	1.8
	10	8.0	5.6	16.0	12.0	10.0	13.0	42.0	1.6
	12	8.0	5.6	18.0	12.0	10.0	13.0	42.0	1.3
	B, 5, 6, 8	9.5	7.0	13.5	9.7	8.3	13.0	40.0	2.4
CAT25	10	9.5	7.0	16.0	12.0	10.0	13.0	44.0	2.0
	12	9.5	7.0	18.0	12.0	10.0	13.0	44.0	1.8
CAT35	B, 5, 6, 8	11.0	8.2	15.5	9.7	8.3	14.0	41.0	2.8
	10	11.0	8.2	15.5	12.0	10.0	14.0	45.0	2.8
	12	11.0	8.2	18.0	12.0	10.0	14.0	45.0	2.5
	B, 5, 6, 8	12.1	9.5	17.2	9.7	8.3	18.0	46.0	2.6
CAT50	10, 12	12.1	9.5	17.2	12.0	10.0	18.0	50.0	2.6
	B, 5, 6, 8	15.0	11.5	21.4	9.7	8.3	18.0	48.0	3.5
CAT70	10, 12	15.0	11.5	21.4	12.0	10.0	18.0	52.0	3.5
	14, 16	15.0	11.5	21.4	16.5	16.5	18.0	64.0	3.5
CAT95	B, 8, 10, 12	17.0	13.5	24.5	12.0	10.0	24.0	58.0	3.5
	14, 16	15.0	11.5	24.5	16.5	16.5	18.0	64.0	3.5
CAT120	B, 8, 10, 12, 14, 16	19.0	15.0	27.2	16.5	16.5	27.0	75.0	4.0
	20	19.0	15.0	27.2	18.7	14.3	27.0	75.0	4.0
CAT150	B, 8, 10, 12, 14, 16	21.0	16.5	30.0	16.5	16.5	27.0	78.0	4.5
	20	21.0	16.5	30.0	17.0	16.0	27.0	78.0	4.5
CAT185	B, 8, 10, 12, 14, 16	23.0	18.5	33.5	16.5	16.5	30.0	82.0	4.5
	20	23.0	18.5	33.5	17.0	16.0	30.0	82.0	4.5
CAT240	B, 8, 10, 12, 14, 16, 20	26.0	21.0	37.7	18.0	17.0	32.0	88.0	5.0
CAT300	B, 10, 12, 14, 16, 20	28.0	23.0	41.0	17.0	17.0	37.0	95.0	5.0
CAT400	B, 10, 12, 14, 16, 20	32.0	27.0	47.3	20.0	20.0	38.0	103.0	5.0
CAT500	B, 8, 10, 12, 14, 16, 18, 20	36.0	30.0	53.0	20.0	20.0	43.0	105.0	6.0
CAT630	B, 10, 12, 14, 16, 20, 22	44.0	33.8	63.0	24.0	24.0	46.0	125.0	10.2
CAT800	B, 10, 12, 14, 16, 18, 20, 22	49.0	38.0	70.0	36.0	36.0	56.0	169.0	11.0
CAT1000	B, 10, 12, 14, 16, 18, 20, 22	53.0	42.5	77.0	33.5	33.5	56.0	170.0	10.5

NOTE: Stud Size B = Blank Palm
Also available with no inspection hole

HEAVY DUTY TERMINAL LUGS - TYPE NT

The numerical part of the series reference denotes the conductor cross sectional area in mm². Thus to order, for example, a terminal for a 25mm² conductor and an M8 stud size the full ordering reference is CAT25-8NT. The following information is intended to provide comprehensive ordering assistance and dimensional data on our wide range.

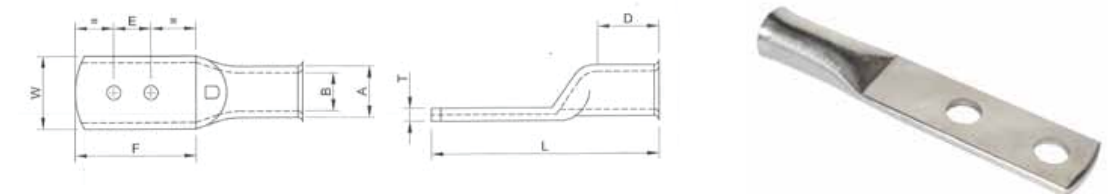


CAT REF	STUD; SIZE (MM)	A	B	W	E	F	D	L	T
CAT10	6NT	6.2	4.5	10.4	6.2	6.2	9.3	24	1.3
	8NT	6.6	4.7	13.5	8.0	7.0	9.5	29.5	1.2
CAT16	5NT	7.5	5.5	10.8	8.8	6.2	9.5	30.0	2.0
	6NT	7.5	5.5	10.8	8.8	6.2	9.5	30.0	2.0
	8NT	7.5	5.5	13.5	8.0	7.0	9.5	30.0	1.6
	10NT	7.5	5.5	15.0	10.9	9.6	9.5	35.5	1.5
CAT25	6NT	9.4	7.0	13.8	8.8	6.2	12.0	32.5	2.4
	8NT	9.4	7.0	13.8	8.0	7.0	12.0	32.5	2.4
	10NT	9.4	7.0	16.0	10.9	9.6	12.0	38.0	2.1
	12NT	9.4	7.0	18.0	10.5	10.0	12.0	38.0	1.9
CAT35	5NT, 6NT	10.6	8.2	15.3	8.8	6.2	14.0	35.0	2.4
	8NT	10.6	8.2	15.3	8.0	7.0	14.0	35.0	2.4
	10NT	10.6	8.2	15.3	10.9	9.6	14.0	40.5	2.4
	12NT	10.6	8.2	18.0	10.5	10.0	14.0	40.5	2.2
CAT50	6NT	11.9	9.5	17.4	8.8	6.2	14.9	37.0	2.5
	8NT	11.9	9.5	17.4	8.0	7.0	14.9	37.0	2.5
	10NT	11.9	9.5	17.4	10.9	9.6	14.9	42.5	2.5
	12NT	11.9	9.5	17.4	10.5	10.0	14.9	42.5	2.5
CAT70	6NT	14.5	11.5	20.9	8.8	6.2	16.0	40.5	3.0
	8NT	14.5	11.5	20.9	8.0	7.0	16.0	40.5	3.0
	10NT	14.5	11.5	20.9	10.9	9.6	16.0	46.0	3.0
	12NT	14.5	11.5	20.9	10.5	10.0	16.0	46.0	3.0
CAT95	14NT, 16NT	14.5	11.5	20.9	16.0	13.0	17.0	55.0	3.0
	8NT	16.7	13.5	24.3	10.9	9.6	18.0	49.5	3.2
	10NT	16.7	13.5	24.3	10.9	9.6	19.0	49.5	3.2
CAT120	12NT	16.7	13.5	24.3	10.5	10.0	19.0	49.5	3.2
	B, 8NT, 10NT, 12NT	19.0	15.0	27.3	14.0	10.0	19.0	55.5	4.0
	14NT	19.0	15.0	27.3	13.2	10.8	19.0	55.5	4.0
CAT150	8NT, 10NT, 12NT	21.0	16.5	30.2	14.0	10.0	23.0	61.0	4.5
	14NT	21.0	16.5	30.2	13.2	10.8	23.0	61.0	4.5
CAT185	B, 8NT, 10NT, 12NT	23.0	18.5	33.3	14.0	10.0	26.0	66.5	4.5
	14NT	23.0	18.5	33.3	13.2	10.8	26.0	66.5	4.5

NOTE: Stud Size B - Blank Palm
Also available with no inspection hole

EXTENDED PALM 2 HOLE FIXING LUGS - TYPE POI

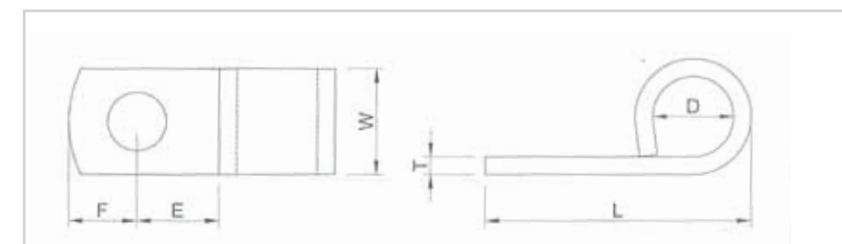
The numerical part of the series reference denotes the conductor cross sectional area in mm². The following information is intended to provide comprehensive ordering assistance and dimensional data on our wide range.



CAT REF	STUD; SIZE (MM)	A	B	W	E	F	D	L	T
CAT10POI	6.5	6.9	4.4	11.0	16.0	34.0	12.0	52.0	2.4
CAT16POI	6.5	8.0	5.6	11.0	16.0	34.0	12.0	52.0	2.4
CAT25POI	6.5	9.5	7.0	13.5	16.0	34.0	13.0	55.0	2.4
CAT35POI	6.5	11.0	8.2	15.5	16.0	34.0	14.0	56.0	2.8
CAT50POI	6.5	12.1	9.5	17.2	16.0	34.0	18.0	61.0	2.6
CAT70POI	12.5	15.0	11.5	21.2	45.0	75.0	18.0	106.0	3.5
CAT95POI	12.5	17.0	13.5	24.5	45.0	75.0	24.0	112.0	3.5
CAT120POI	12.5	19.0	15.0	27.5	45.0	75.0	27.0	117.0	4.0
CAT150POI	12.5	21.0	16.5	30.3	45.0	75.0	27.0	119.0	4.5
CAT185POI	12.5	23.0	18.5	33.5	45.0	75.0	34.0	125.0	4.5
CAT240POI	12.5	26.0	21.0	37.7	45.0	75.0	32.0	125.0	5.0
CAT300POI	12.5	28.0	23.0	40.8	45.0	75.0	37.0	136.0	5.0
CAT400POI	12.5	32.0	27.0	47.3	45.0	75.0	37.0	138.0	5.0
CAT500POI	12.5	38.0	30.0	55.0	45.0	75.0	60.0	167.0	8.2
CAT630POI	12.5	44.0	33.8	63.0	45.0	75.0	60.0	167.0	10.2
CAT800POI	12.5	49.0	38.0	70.0	45.0	75.0	56.0	173.0	11.0

NOTE: The stud size and centres shown are standard. Other sizes and centres can be provided if required.
Available with or without inspection hole.

FLAG TERMINAL - TYPE FT



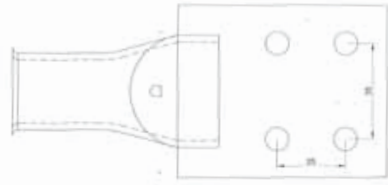
CAT REF	CONDUCTOR; SIZE (MM ²)	STUD; SIZE (MM)	L	W	T	F	E	D
CAT10FT	10	5, 6, 8	27.0	12.7	1.6	7.9	10.7	4.8
		10	37.0	15.9	1.6	7.9	10.7	4.8
CAT16FT	16	5, 6, 8	28.0	12.7	1.6	7.9	10.7	6.0
		10	38.0	15.9	1.6	7.9	10.7	6.0
CAT25FT	25	5, 6, 8	31.0	12.7	1.6	7.9	11.9	7.6
		10	41.0	15.9	1.6	7.9	11.9	7.6
CAT35FT	35	5, 6, 8, 10, 12	32.0	12.7	1.6	7.9	11.9	8.4
CAT50FT	50	5, 6, 8	33.0	15.9	1.6	7.9	11.9	9.5
		10	41.0	15.9	1.6	7.9	21.0	9.5
CAT70FT	70	5, 6, 8	44.7	15.9	1.6	7.9	22.5	11.5
		10	52.7	15.9	1.6	7.9	31.0	11.5

TRANSFORMER TERMINALS 4 HOEL FIXING - TYPE 8TF4H

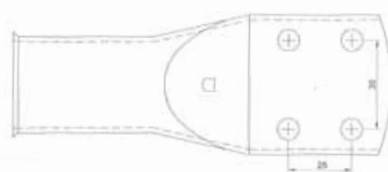
The numerical part of the series reference denotes the conductor cross sectional area in mm²



CAT REF	
CAT70	8TF4H
CAT95	8TF4H
CAT120	8TF4H
CAT150	8TF4H
CAT185	8TF4H
CAT240	8TF4H
CAT300	8TF4H
CAT400	8TF4H
CAT500	8TF4H
CAT630	8TF4H
CAT800	8TF4H
CAT1000	8TF4H



CAT70 to CAT300 are of the brazed palm terminal type with barrel dimensions identical to Type HD heavy duty terminals

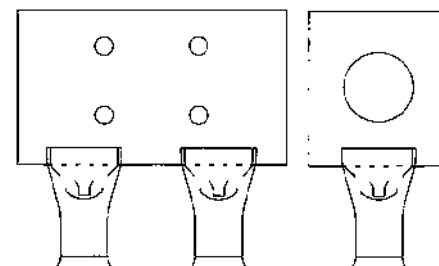


CAT400 to CAT1000 are not dimensionally identical to the Type HD heavy duty terminals. Please call for further details

Different Hole Sizes Available.
Available with or without inspection hole

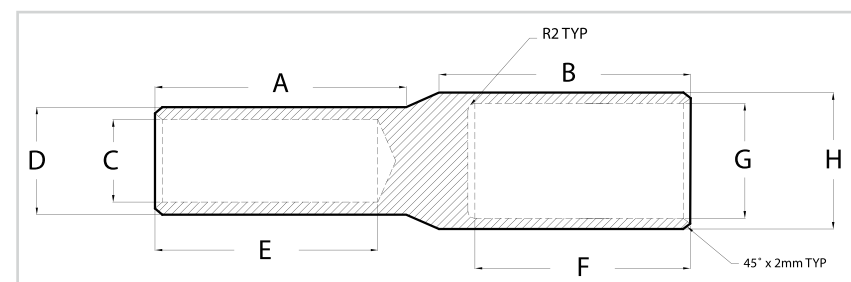
BRAZED PALM ASSEMBLIES

Heavy duty terminal barrels brazed onto specially machined fixings of any description. The brazed joint gives low millivolt drop and higher mechanical strength than the copper on either side of the joint. Standard crimping tools can be used to connect the cable to virtually any type of connector minimising fixing time and maximising electrical and mechanical joint performance

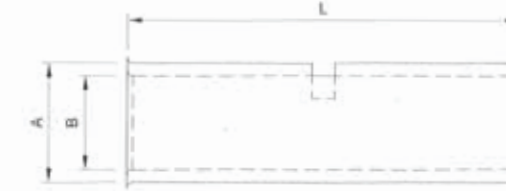


HIGH VOLTAGE SPLICES

Copper Pin Terminals and Dissimilar Splices up to 36kV available manufactured from solid Thick Wall Copper Rod and fully annealed to stop any splitting when crimped. Manufactured to customer request.



HEAVY DUTY BUTT SPLICES - TYPE BSHD



CAT REF	A	B	L	
CAT1.5 BS	3.6	1.8	16.0	
CAT2.5 BS	4.0	2.3	20.0	
CAT4 BS	4.8	3.0	22.0	
CAT6 BS	5.5	3.8	22.0	
CAT10 BS	6.2	4.4	23.0	
CAT16 BS	7.0	5.6	30.0	
CAT25 BS	9.0	7.0	35.0	
CAT35 BS	10.5	8.2	39.0	
CAT50 BS	12.1	9.5	44.0	
CAT70 BS	15.0	11.5	44.0	
CAT95 BS	17.0	13.5	55.0	
CAT120 BS	19.0	15.0	63.0	
CAT150 BS	21.0	16.5	66.0	
CAT185 BS	23.0	18.5	74.0	
CAT240 BS	26.0	21.0	80.0	
CAT300 BS	28.0	23.0	89.0	
CAT400 BS	32.0	27.0	90.0	
CAT500 BS	38.1	30.0	135.0	No Inspection Hole/Sight Hole
CAT630 BS	44.0	33.8	135.0	No Inspection Hole/Sight Hole
CAT800 BS	49.0	38.0	135.0	No Inspection Hole/Sight Hole
CAT1000 BS	53.0	42.5	135.0	No Inspection Hole/Sight Hole



PARALLEL BUTT SPLICES - TYPE PS

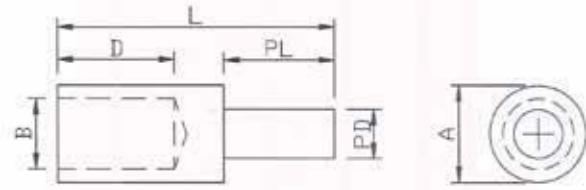


CAT REF	A	B	L
CAT10 PS	6.9	4.6	9.0
CAT16 PS	8.0	5.6	14.0
CAT25 PS	9.5	7.0	16.0
CAT35 PS	11.0	8.2	18.0
CAT50 PS	12.1	9.5	20.0
CAT70 PS	15.0	11.5	23.0
CAT95 PS	17.0	13.5	26.0
CAT120 PS	19.0	15.0	31.0
CAT150 PS	21.0	16.5	32.0
CAT185 PS	23.0	18.5	36.0
CAT240 PS	26.0	21.0	39.0
CAT300 PS	28.0	23.0	43.0
CAT400 PS	32.0	27.0	44.0
CAT500 PS	38.1	30.0	66.0
CAT630 PS	44.0	33.0	66.0
CAT800 PS	49.0	38.0	66.0
CAT1000 PS	53.0	42.5	66.0



COPPER PIN TERMINALS

Copper pin terminals are manufactured to order and are available to cater for conductor sizes from 1.5mm² to 1000mm². When ordering specify conductor cross sectional area, pin length and pin diameter required.

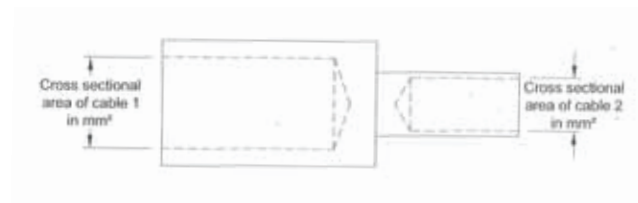


CAT REF	A	B	D	L	PL	PD
CAT10 PIN	6.25	4.45	8.00	23.00	10.00	3.80
CAT16 PIN	7.00	5.35	11.00	30.00	13.50	3.80
CAT25 PIN	9.50	7.00	11.25	38.00	19.00	4.50
CAT35 PIN	10.70	8.00	12.00	40.00	19.00	5.00
CAT50 PIN	12.30	9.50	16.00	41.00	19.00	7.50
CAT70 PIN	15.80	11.25	19.50	45.00	18.00	8.00
CAT95 PIN	17.00	13.50	20.00	45.00	19.00	8.00
CAT120 PIN	19.00	15.00	24.00	54.00	24.00	10.00
CAT150 PIN	22.00	16.50	27.00	56.00	24.00	10.00
CAT185 PIN	25.00	18.50	30.00	60.00	25.00	8.00
CAT240 PIN	25.00	21.00	32.00	62.00	25.00	14.00
CAT300 PIN	28.00	23.00	42.00	82.00	32.00	16.00
CAT400 PIN	32.00	27.00	45.00	85.00	32.00	16.00



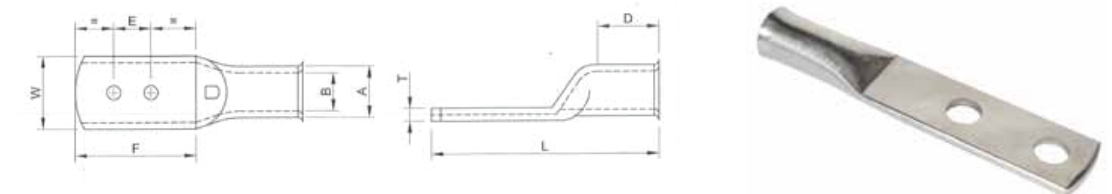
DISSIMILAR COPPER SPLICES

Copper splices for jointing cables of dissimilar cross sectional areas are manufactured to order and are available to cater for conductor sizes from 1.5mm² to 1000mm². When ordering specify the conductor cross sectional area of both conductors.



TELECOMMUNICATION TERMINALS - TYPE POI

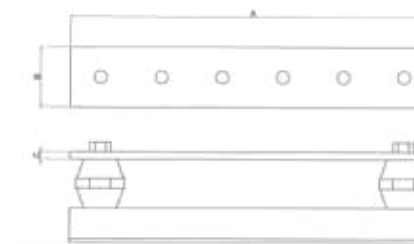
Material specification: BSEN 12449 C106 Internal Barrel to Suit Cable Defined in BS6360. Standard finish: Bright Electro-Tin to BS1872.



SERIES	A	B	W	E	D	L	T	F
CAT 10 POI	6.9	4.4	11.0	16.0	10.0	50.0	2.0	34.0
CAT 16 POI	8.0	5.6	11.0	16.0	12.0	52.0	2.4	34.0
CAT 25 POI	9.5	7.0	13.5	16.0	13.0	55.0	2.4	34.0
CAT 35 POI	11.0	8.2	15.5	16.0	14.0	56.0	2.8	34.0

NOTE: The Stud size and centres shown are standard. Other sizes and centres can be provided if required.

EARTH BARS



Nominal Dimensions MM

CAT REF	A	B	C	Studs
EA4	300	50	6	4
EA6	400	50	6	6
EA8	500	50	6	8
EA10	600	50	6	10

Supplied with: M10 Brass Bolts, washers and nuts
Isolators and fixings
Earth bar 50 x 6 Copper
Aluminum Base Plate

Supplied in constructed state

